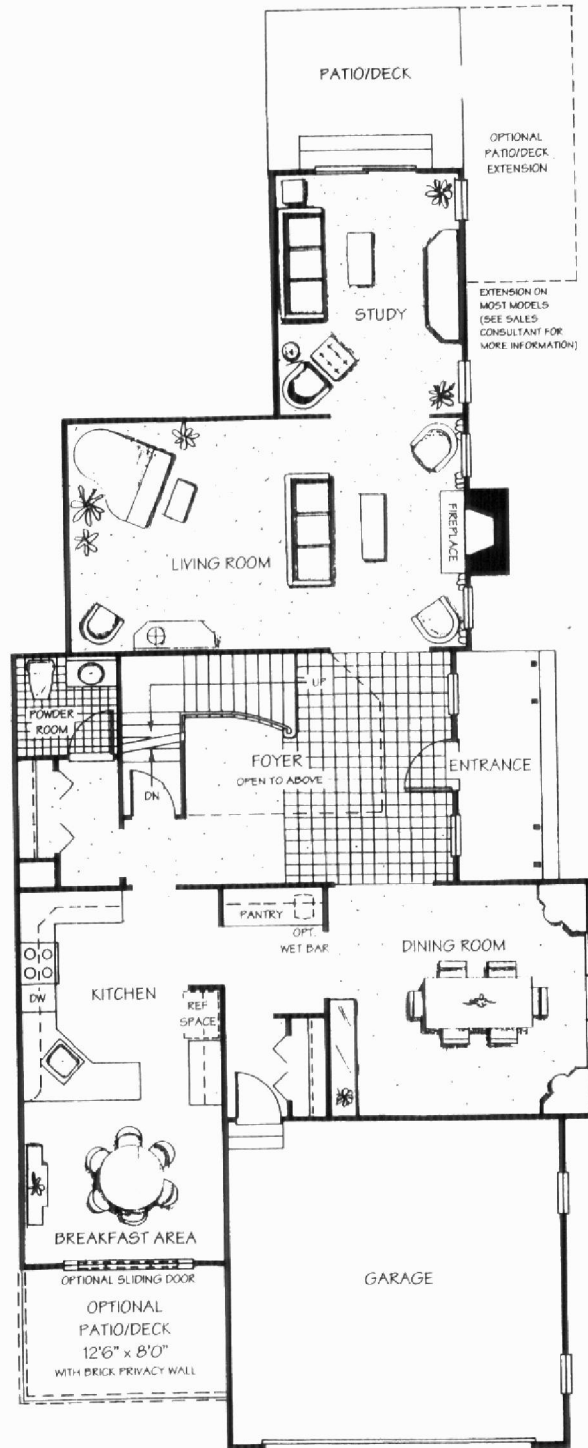
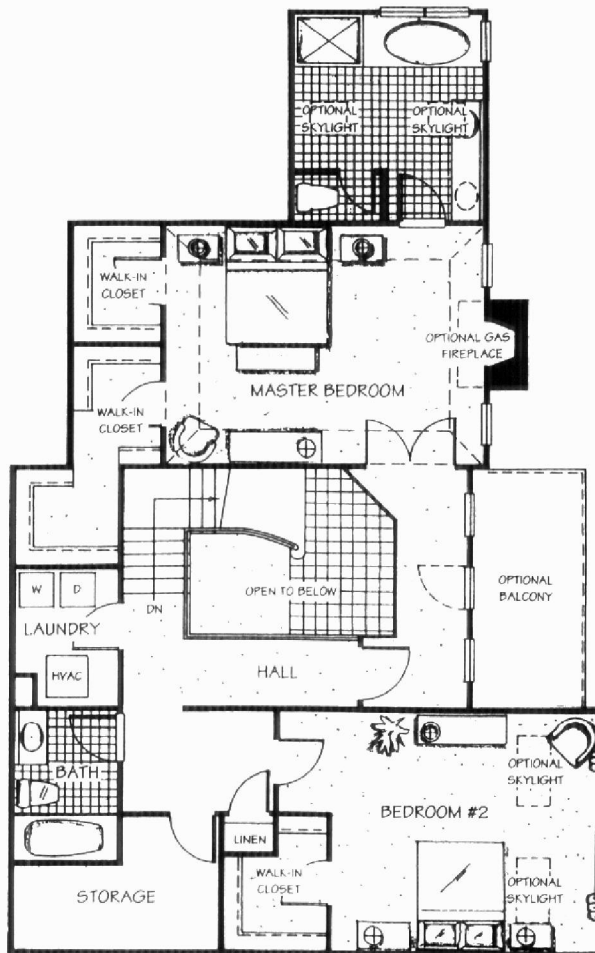


The Devonshire



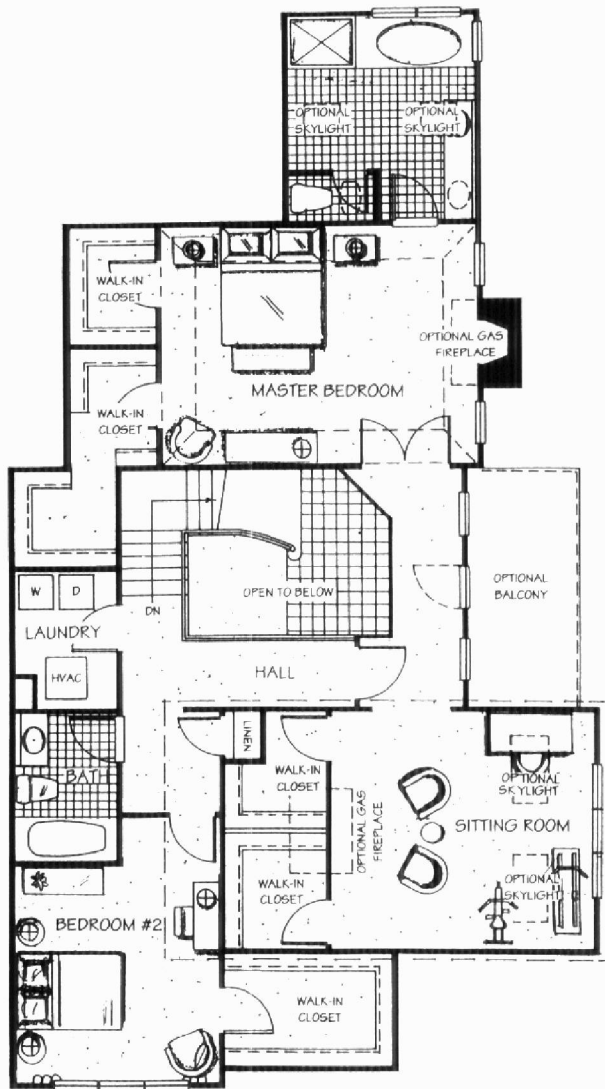
First Floor

Artist's renderings and floor plans may contain or show optional extras not included in model base price. Elevation details, floor plans and room dimensions are approximate and subject to field variation. We reserve the right to make changes in design, terms and products without notice or obligation.

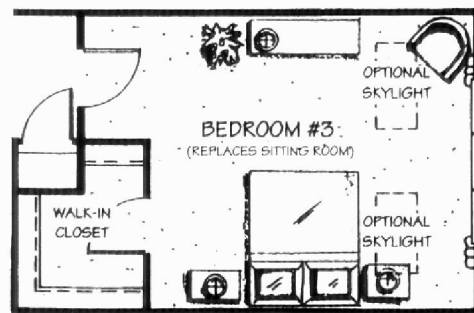


The Devonshire II
Second Floor

LIVING ROOM	23'11" x 14'0"
STUDY	11'1" x 14'4"
DINING ROOM	15'4" x 14'8"
KITCHEN	12'0" x 12'9"
BREAKFAST AREA	12'0" x 9'11"
MASTER BEDROOM	18'7" x 14'1"
BEDROOM #2 (DEVONSHIRE II)	15'4" x 14'0"
BEDROOM #2 (DEVONSHIRE II+)	12'0" x 12'7"
SITTING ROOM (DEVONSHIRE II+)	15'4" x 14'1"
BEDROOM #3 (DEVONSHIRE III)	15'4" x 14'1"
TOTAL LIVING AREA -	
DEVONSHIRE II+ & III	2953 SQ. FT.
TOTAL LIVING AREA -	
DEVONSHIRE II	2821 SQ. FT.



The Devonshire II+
Second Floor



The Devonshire III
Second Floor